

USE
IN



KEY TO LIFE®

See what all the hype is about...



introducing our NEW
Top Seller

Silver Bullet

HOW + WHEN TO USE IT...

Silver Bullet, a Wettable Sulfur, stays suspended in tanks and can be applied as a foliar spray. A good mixture to start clones with is 2-4 grams (1/2-1 teaspoon) per gallon of water. We recommend increasing the dose by 1g each time you apply the product up to 10g/Gal. This mixture should be sprayed on the upper and under side of foliage, giving it a good drenching. We suggest one foliar or root drench per week.

WHAT IS IT...

97% Sulfur + Enzymatic Ionic Wetting Agent that self mixes & spreads evenly on plant tissue. It leaves little to no residue with an average size of 3 microns. Sulfur is directly related to the terpene levels in plants. It also promotes great structure and growth in vegetative stages. Silver Bullet is safe to spray on vegetables, ornamentals, fruits, vines, and cannabis.

FEED SCHEDULE (GRAM/GAL)

	VEG				BLOOM								
	1	2	3	4	1	2	3	4	5	6	7	8	9
root	4		6		6		4						
foliar	4	5	6	5	4	3	2						

HOW IT WORKS...

SilverBullet boosts nitrogen uptake and stimulates carbon, hydrogen and oxygen absorption. Sulfur is an essential element for life and is found in two amino acids.

CONVERSION

SILVER BULLET	
Volume	Weight (g)
1 tsp	3.8
1 Tbsp	11.6
1 Cup	180.1

RESERVOIR DOSAGE

Reservoir Size (Gal)	SILVER BULLET	
	2 g/gal	6 g/gal
	Total Nutrient Input (g)	
5	10.0	30.0
25	50.0	150.0
50	100.0	300.0
100	200.0	600.0
250	500.0	1500.0



PRO TIPS...

Do not apply Silver Bullet when the temperature is hot (over 24°C/75°F). Also do not apply 21 days after or before using an oil based spray.

- Do not apply after week 3 of bloom
- Safe on clones
- Can dunk plants into Silver Bullet solution
- Keep away from flames or sparks
- Most Sulfur products are oil based which can cause burning. Silver Bullet does not.

- This product does not react well with plants that have a high amount of leaf shine from oil based products. If you have used an oil based product and would like to try Silver Bullet, we recommend to first do a "wash" of microbes, yucca, wetting agent, coconut or aloe and wait 1-7 days depending on amount of leaf shine present. Then mix and apply a small amount of Silver Bullet solution to a few plants to test compatibility.
- Sulfur may irritate nasal passages, skin & eyes. Use Proper PPE. 24hr REI

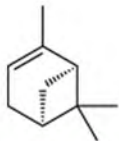
HOW MANY GALLONS

SILVER BULLET		
Size	2 g/gal	6 g/gal
	Total Gallons Made	
2 oz.	29.8	9.9
8 oz.	119.1	39.7
16 oz.	238.1	79.4
32 oz.	476.2	158.7
2 Gal. (4lb)	952.4	317.5
5 Gal. (10lb)	2381.1	793.7
20 lb.	4762.1	1587.4
50 lb.	11905.3	3968.4

COST PER DOSE

SILVER BULLET		
Size	2 g/gal	6 g/gal
	Cost per Dose	
2 oz.	\$0.951	\$2.853
8 oz.	\$0.476	\$1.428
16 oz.	\$0.383	\$1.150
32 oz.	\$0.291	\$0.873
2 Gal. (4lb)	\$0.296	\$0.889
5 Gal. (10lb)	\$0.203	\$0.610
20 lb.	\$0.134	\$0.403
50 lb.	\$0.102	\$0.307

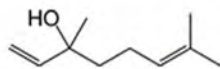
COMMON TERPENES...



A-PINENE

ANTI-INFLAMMATORY
BRONCHODILATOR
AIDS MEMORY
ANTI-BACTERIAL

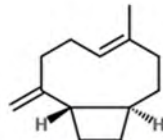
also found in
pine needles



LINALOOL

ANESTHETIC
ANTI-CONVULSANT
ANALGESIC
ANTI-ANXIETY

also found in
lavender

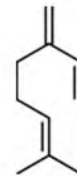


BETA

CARYOPHYLLENE

ANTI-INFLAMMATORY
ANALGESIC
PROTECTS CELLS LINING THE
DIGESTIVE TRACT

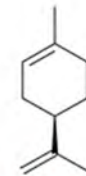
also found in
black pepper



MYRCENE

CONTRIBUTES TO
SEDATIVE EFFECT OF
STRONG INDICAS
SLEEP AID
MUSCLE RELAXANT

also found in
hops



LIMONENE

TREATS ACID REFLUX
ANTI-ANXIETY
ANTIDEPRESSANT

also found in
citrus

